



AIR CARBON ARC GOUGING



Arc Gouging Catalog

LIT.9205

May 2009

Technology for the Welder's World



Gouging Torch

TEAM BINZEL® G3000 and G4000 Air Carbon Arc Gouging Torches

Binzel Gouging Torches, G3000 and G4000, are used for gouging defective welds, weld seam preparation, crack removal and repair, chamfering, surface removal and keyhole cutting for all common materials such as carbon or stainless steel, malleable and ductile iron, copper alloys, nickel, aluminum and other non-ferrous metals. Rugged, safe and easy to handle, both torches offer a heat resistant handle, rotatable nozzle suitable for round and flat electrodes and a highly flexible cable with a swivel joint.



G3000 Technical Data

Rating	max. 600 amp (at 60% Duty Cycle)
Nom. Air Pressure:	80 psi
Flow Rate:	21-28 cfm
Connection Air Supply:	3/8"-18 NPT
Weight:	4 lb / 1.8 kg



G4000 Technical Data

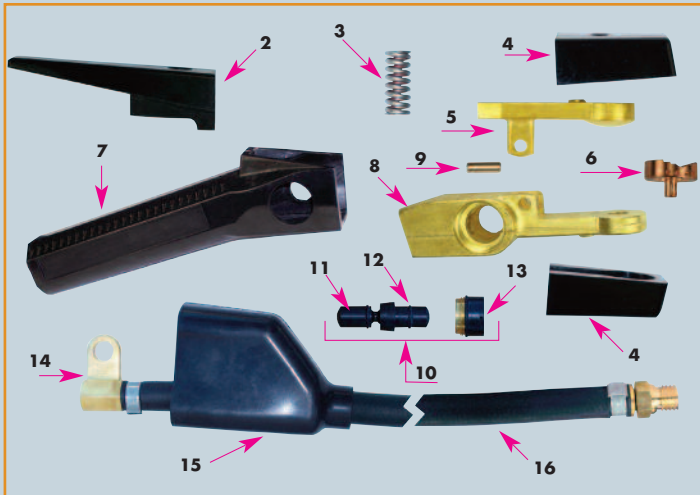
Rating:	max. 1000 amp (at 35% Duty Cycle)
Nom. Air Pressure:	80 psi
Flow Rate:	21-28 cfm
Connection Air Supply:	3/8"-18 NPT
Weight:	5.4 lb / 2.45 kg



Gouging Torch

TEAM BINZEL® G3000 and G4000 Air Carbon Arc Gouging Torches

No. 1 - Complete Torch G3000



No. 1 - Complete Torch G4000



Note: Torch parts interchangeable with ARCAIR® torches. ARCAIR® is a registered trademark of Thermadyne Holdings Corp.

TEAM BINZEL ARC GOUGING PARTS LIST

ITEM NO.	DESCRIPTION	G3000 PART NO.	G4000 PART NO.
1	Torch Only	G01-065-001	G01-082-002
1	Torch, 7' (2.1m) Cable	G61-065-006	G61-082-008
1	Torch, 10' (3m) Cable	G61-065-007	G61-082-009
2	Lever Assembly with Screw	G94-476-080	G94-476-066
3	Spring	G94-800-191	G94-800-077
4	Insulator Assembly with Screws	G94-433-193	G94-433-183
5	Upper Arm	G94-048-120	G94-048-088
6	Head Assembly with Screws	G94-378-366	G94-378-368
7	Handle	G94-370-179	G94-370-163
8	Torch Body	G94-103-232	G94-103-206
9	Hinge Pin	G94-632-101	G94-632-094
10	Spool Assy with Bonnet	G94-104-016	G94-104-016
11	Spool Assembly (includes O-Rings)	G94-801-011	G94-801-011
12	O-Rings	G94-710-036	G94-710-036
13	Bonnet	G94-104-012	G94-104-012
14	Female Connector (air/power)	G94-170-150	G94-170-150
15	Insulating Boot	G94-105-014	G94-105-014
16	Cable Assembly, 7' (2.1m)	G70-088-107	G70-084-207
16	Cable Assembly, 10' (3.0m)	G70-088-110	G70-084-210

1-800-542-4867

ABIARC Gouging Electrodes

TEAM BINZEL® gouging electrodes are made of artificial graphite and have a pure copper coating. Available in a variety of shapes and diameters to meet various applications

- Pure copper coated - excellent electric conductivity
- High density (made of artificial graphite) leads to high metal removal rate
- Less consumption of electrodes - cost reduction
- Constant quality - for safe processing
- High metal removal rate - effective process
- 100% delivery guaranteed - no downtime
- Extreme low burn back rate



ABIARC POINTED DC GOUGING ELECTRODES

PART NO.	SIZE	BOX QTY	AMPERAGE	AIR PRESSURE	FLOW RATE
G22-023-003	1/8" x 12" (3.2x305mm)	100	60-90	80 psi	21cfm - 28cfm
G22-983-003	5/32" x 12" (4.03x305mm)	50	90-150	80 psi	21cfm - 28cfm
G22-033-003	3/16" x 12" (5.0x305mm)	50	200-250	80 psi	21cfm - 28cfm
G22-043-003	1/4" x 12" (6.5x305mm)	50	300-400	80 psi	21cfm - 28cfm
G22-053-003	5/16" x 12" (8.0x305mm)	50	350-450	80 psi	21cfm - 28cfm
G22-063-003	3/8" x 12" (9.5x305mm)	50	450-600	80 psi	21cfm - 28cfm
G22-082-003	1/2" x 14" (13.0x355mm)	50	800-1000	80 psi	21cfm - 28cfm

ABIARC JOINTED DC GOUGING ELECTRODES

PART NO.	SIZE	BOX QTY	AMPERAGE	AIR PRESSURE	FLOW RATE
G24-064-003	3/8" x 17" (9.5x430mm)	100	450-600	80 psi	21cfm - 28cfm
G24-084-003	1/2" x 17" (13.0x430mm)	100	800-1000	80 psi	21cfm - 28cfm
G24-104-003	5/8" x 17" (16.0x430mm)	100	1000-1250	80 psi	21cfm - 28cfm
G24-124-003	3/4" x 17" (19.0x430mm)	100	1250-1600	80 psi	21cfm - 28cfm

Technology for the Welder's World.

Alexander Binzel Corporation
650 Medimmune Ct., Suite 110
Frederick, MD 21703-8619
Tel: 301.846.4196
Fax: 301.846.4497
www.abicorusa.com

BINZEL, S.A. DE C.V.
Municipio de Pabellon de Arteaga 102
Valle de Aguascalientes, 20358
San Francisco de los Romo, Ags. MEXICO
Tel: +52(499) 9730133
Fax: +52(449) 9731388
E-mail: www.binzel.com.mx

Abicor Binzel Canada, Inc.
55 Mills Road, Units 1-3
Ajax, Ontario L1S 2H2 Canada
Tel: 905.428.1611
Fax: 905.428.1598
Email: information@binzel.ca

