

Gouging Torch G 3000 / G 4000



Rugged and easy to handle ...

The gouging torches TEAM BINZEL® G 3000 and G 4000 are safe and easy to handle. They are being used for gouging, weld seam preparing, gouging out of blowholes and cracks, chamfering, cutting, surface removal and keyhole cutting for all common materials.

Special features:

- Rugged and heat resistant handle
- Turnable nozzle suitable for round and flat electrodes
- High air consumption
- High flex cable
- Swivel joint

TEAM BINZEL®

www.binzel-abicor.com

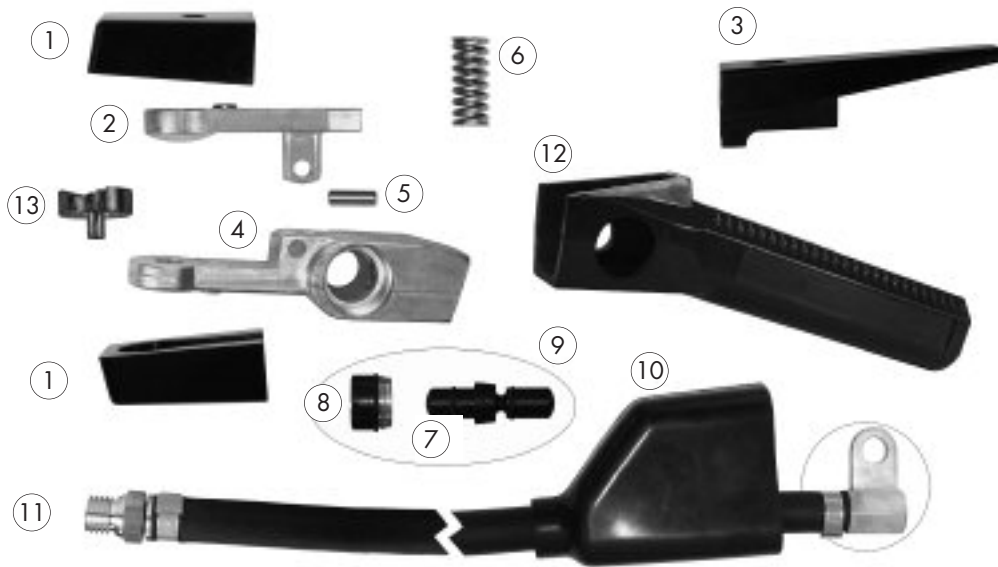
Gouging Torch TEAM BINZEL® G 3000



Technical data acc. to EN 60 974-11 Type B: Gouging Torch TEAM BINZEL® G 3000

Rating:	max. 600 A (at 60% Duty cycle)
Nom. air pressure:	7 bar
Nom. volume flow:	approx. 0.60 m ³ /min
Connection air supply:	3/8"-18 NPT
Weight:	1.20 kg (Working height 1 m)

Wear parts Gouging Torch TEAM BINZEL® G 3000



Build group	Pos.	Description	Part-No.
Gouging Torch TEAM BINZEL® G 3000		Gouging Torch TEAM BINZEL® G 3000 (torch only)	516.0001
		Gouging Torch TEAM BINZEL® G 3000 cpl. with cable assembly (length= 2.1 m)	516.0002
		Gouging Torch TEAM BINZEL® G 3000 cpl. with cable assembly (length= 3.0 m)	516.0003
Cable assemblies		Cable assembly, length= 2.1 m	516.0004
		Cable assembly, length= 3.0 m	516.0005
Wear parts	1	Insulator set	516.0006
	2	Lever top part	516.0007
	3	Lever	516.0008
	4	Torch body	516.0009
	5	Bolt	516.0010
	6	Pressure spring	516.0011
	7	Slider	516.0012
		Slider with O-ring	516.0013
		O-ring	516.0014
	8	Fastening nut	516.0015
	9	Valve cpl.	516.0016
	10	Insulating part	516.0017
	11	Connector	516.0018
12	Handle	516.0019	
13	Flat nozzle	516.0020	

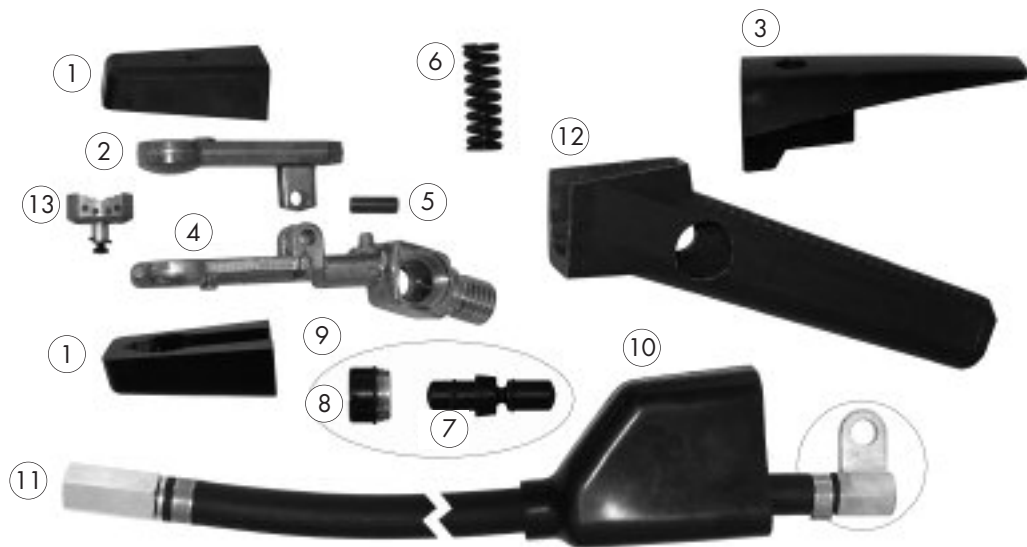
Gouging Torch TEAM BINZEL® G 4000



Technical data acc. to EN 60 974-11 Type B: Gouging Torch TEAM BINZEL® G 4000

Rating:	max. 1000 A (at 35% Duty cycle)
Nom. air pressure:	7 bar
Nom. volume flow:	approx. 0.70 m ³ /min
Connection air supply:	3/8"-18 NPT
Weight:	1.75 kg (Working height 1m)

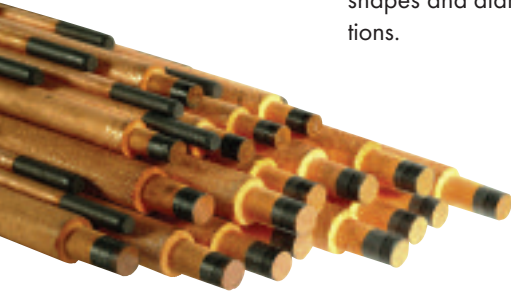
Wear parts Gouging Torch TEAM BINZEL® G 4000



Build group	Pos.	Description	Part-No.
Gouging Torch TEAM BINZEL® G 4000		Gouging Torch TEAM BINZEL® G 4000 (torch only)	516.0022
		Gouging Torch TEAM BINZEL® G 4000 cpl. with cable assembly (length=2.1 m)	516.0023
		Gouging Torch TEAM BINZEL® G 4000 cpl. with cable assembly (length=3.0 m)	516.0024
Cable assemblies		Cable assembly, length=2.1 m	516.0025
		Cable assembly, length=3.0 m	516.0026
Wear parts	1	Insulator set	516.0027
	2	Lever top part	516.0028
	3	Lever	516.0029
	4	Torch body	516.0030
	5	Bolt	516.0031
	6	Pressure spring	516.0032
	7	Slider	516.0012
		Slider with O-ring	516.0013
		O-ring	516.0014
	8	Valve top part	516.0015
	9	Valve cpl.	516.0016
	10	Insulating part	516.0017
	11	Connector	516.0018
12	Handle	516.0033	
13	Flat nozzle	516.0034	

For a nice result also order: ABIARC Gouging electrodes

TEAM BINZEL gouging electrodes are made of artificial graphite and have a pure copper coating. The gouging electrodes are available in a variety of shapes and diameters to meet the various applications.



The features:

- Pure copper coated – good electric conductivity
- High density (made of artificial graphite) – leads to high metal removal rate
- Less consumption of electrodes – cost reduction
- Constant quality – for a safe process
- High metal removal rate – effective process
- 100% delivery guaranteed – no downtime
- Extreme low burn back rate

Order overview ABIARC Gouging electrodes:

ABIARC Gouging electrodes (DC) pointed

Type		Ampère	Pcs.	Part-No.
4 x 305 mm	(5/32" x 12")	250	50	515.0015
5 x 305 mm	(3/16" x 12")	300	50	515.0016
6.5 x 305 mm	(1/4" x 12")	400	50	515.0017
8 x 305 mm	(5/16" x 12")	500	50	515.0018
9.5 x 305 mm	(3/8" x 12")	600	50	515.0019
13 x 355 mm	(1/2" x 14")	900	50	515.0020

ABIARC Gouging electrodes (AC) pointed

Type		Ampère	Pcs.	Part-No.
4 x 305 mm	(5/32" x 12")	250	50	515.0021
5 x 305 mm	(3/16" x 12")	300	50	515.0022
6.5 x 305 mm	(1/4" x 12")	350	50	515.0023
13 x 355 mm	(3/8" x 12")	450	50	515.0024

ABIARC Gouging electrodes (DC) jointed

Type		Ampère	Pcs.	Part-No.
9.5 x 430 mm	(3/8" x 17")	600	50	515.0027
13 x 430 mm	(1/2" x 17")	1400	50	515.0028
16 x 430 mm	(5/8" x 17")	1800	50	515.0029
19 x 430 mm	(3/4" x 17")	2000	50	515.0030

ABIARC Gouging electrodes (DC) flat

Type		Ampère	Pcs.	Part-No.
10x5x305 mm		400	50	515.0025
15x5x305 mm		550	50	515.0026

TEAM BINZEL®

Alexander Binzel Schweisstechnik GmbH & Co. KG
P.O. Box 10 01 53 · D-35331 Gießen
Phone: ++49 (0) 64 08 / 59-0
Fax: ++49 (0) 64 08 / 59-191

www.binzel-abicor.com